

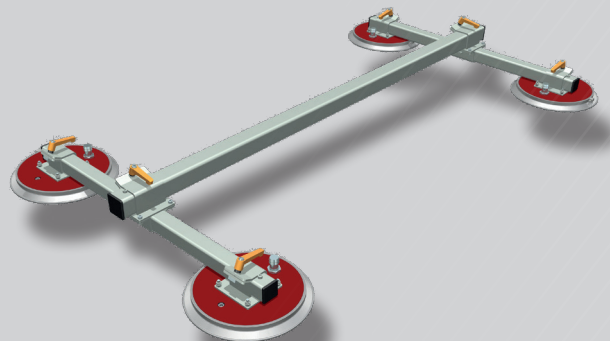


Special beams

Wood handling systems

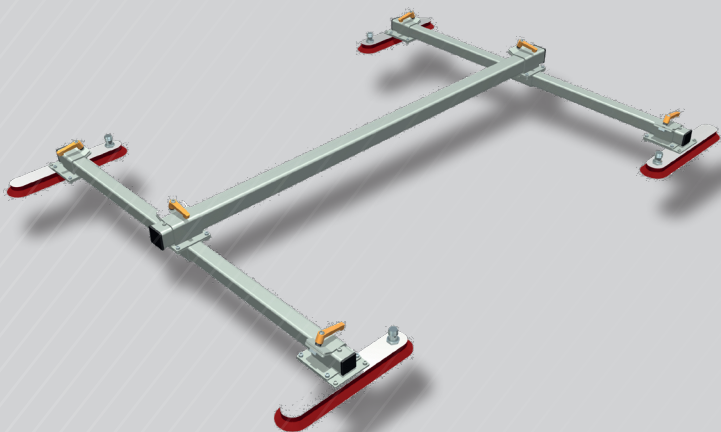
Suctions beam for thin boards

Safe working load up to 250 kg. With 4 suction cups diameter 270 mm on an adjustable beam (beam size: 1500 x 800 mm) for thin dense boards, PVC, aluminum, metal, melamine. Not suitable for MDF and permeable chipboard panels.



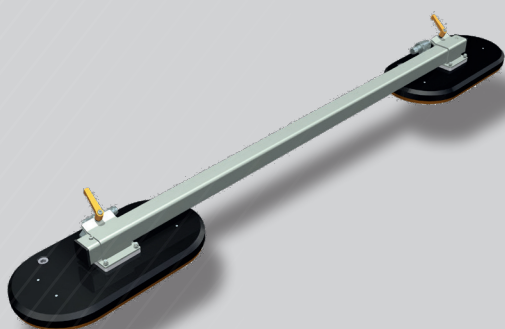
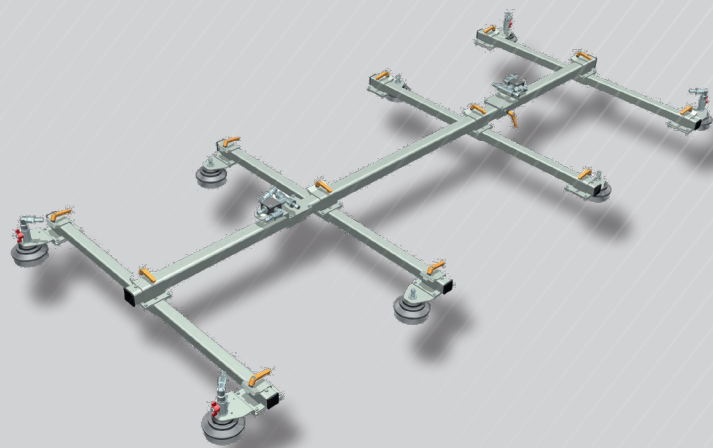
Cross beam for doors

Safe working load up to 200 kg. With 4 oval suction cups 377 x 81 mm on an adjustable beam - Spreader for doors with glass section (beam size 1500 x 1200 mm).



Beam for iron sheets , acrylic glass and thin parts

Safe working load up to 250 kg. With 8 bellows suction cups diameter 115 mm on an adjustable cross beam
- Suction beam with extra length for thin parts (Traverse size 2500 x 1200 mm). The outer suction cups are lockable for lifting of smaller plates.



Cross beam for permeable panels

Safe working load up to 250 kg. Reinforced design with 2 oval suction cups 500 x 250 mm on an adjustable cross beam (beam size 1500 mm) and increased vacuum pump for permeable panels. The reinforced version allows the lifting of materials up to 250 kg.